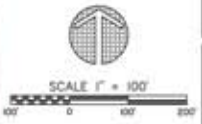
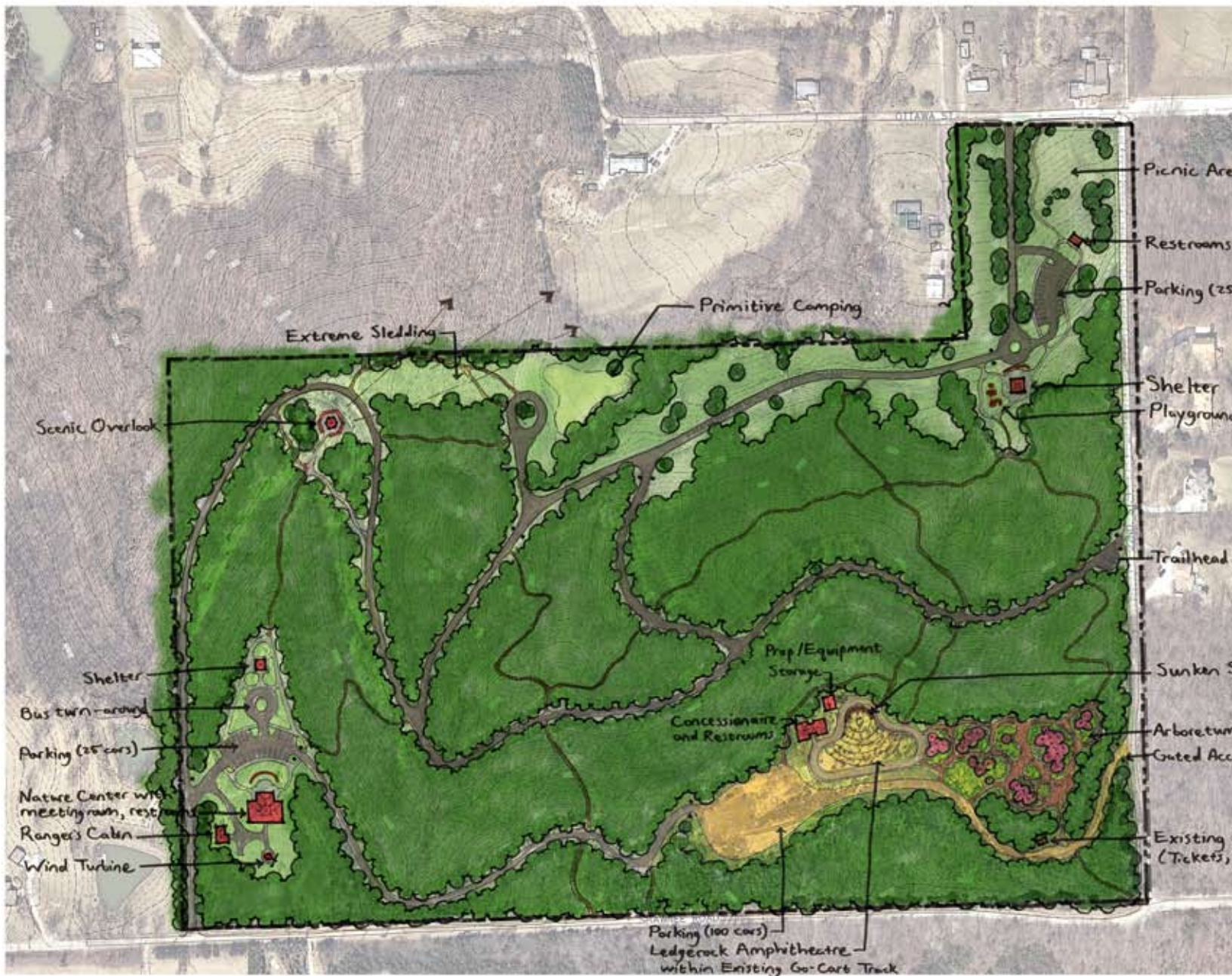




**HAVENS PARK MASTER PLAN
 LEAVENWORTH, KANSAS**

Revisions:
Date: 08/21/09
Project No.: 09-K030
Drawn By: WLT
Checked By: LLB

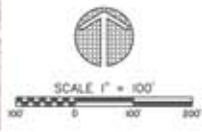




Schwab-Eaton, P.A.
 CIVIL ENGINEER • LAND SURVEYOR
 AND LANDSCAPE ARCHITECTS
 1122 Eastway • Manhattan, Kansas 66520

**HAVENS PARK MASTER PLAN
 LEAVENWORTH, KANSAS**

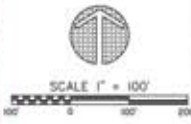
Date: 09/03/09
 Project No.: 09-K230
 Drawn By: WLT
 Checked By: LLB



**CONCEPT
 "B"**



- Trail Connection to Sportsfield
- Parking (20 cars)
- Nature Center and Rest Room
- Shelter
- Playground
- Trailhead
- Amphitheatre with Stage and Fire Pit
- Trailhead
- Outdoor Education Area with Shelter Seating, and Fire Pit within Ex. Go-Cart Track
- Wildlife Viewing Section
- Rock Outcrop (Typical)
- "Miner's Cabin"
- Parking (10 cars)
- Reclaimed Meadow
- Rock Ledge
- Parking (5 cars)
- Trailhead
- Disc Golf Area
- Shelter and Picnic Area
- Interpretive Signs located along trails
- Spiral Overlook
- Rock Outcrop
- Open Lawn/Picnic Area
- Paved Trail
- Shelter
- Picnic Area
- Parking (2 cars)
- Trailhead



Schwab-Eaton, P.A.
 CIVIL ENGINEERS • LAND SURVEYORS
 AND LANDSCAPE ARCHITECTS
 1111 Commerce Alley • Hutchinson, Kansas 67501

**HAVENS PARK MASTER PLAN
 LEAVENWORTH, KANSAS**

Date: 09/03/09
 Project No.: 09-K030
 Drawn By: WLT
 Checked By: LLB

**CONCEPT
 "C"**



Schwab-Eaton, P.A.
 CIVIL ENGINEER • LAND SURVEYOR
 AND LANDSCAPE ARCHITECTS
 1122 East 10th Ave • Leavenworth, Kansas 66042

**HAVENS PARK MASTER PLAN
 LEAVENWORTH, KANSAS**

Revisions:
 Date: 09/03/09
 Project No.: 09-K230
 Drawn By: WLT
 Checked By: LLB

**CONCEPT
 "D"**

